



FOR SALE

Palmerston Road, Westcliff-On-Sea SS0 7FJ

Offers Over £130,000 Leasehold Council Tax Band - C

624.31 sq ft

- Stylish Two Bedroom Second Floor Flat With Contemporary Finishes Throughout
- 50% Shared Ownership
- Private Balcony With Partial Sea Views – Perfect For Morning Coffee
- No Onward Chain – Ready To Move In
- Bright And Airy Open Plan Kitchen And Lounge Space
- Secure Gated Underground Parking With Designated Space
- Steps From Westcliff Train Station
- Access To Communal Roof Terrace With Stunning Sea Views
- Close To Seafront Cafés, Restaurants, And Cliffs Pavilion Theatre
- Sophisticated Monochrome Colour Palette With Gold Detail Features

Selling & letting all types of property in Chalkwell,
Westcliff, Leigh, Southend and the surrounding areas.

appointmoor

Description

50% SHARED OWNERSHIP

Grab your opportunity to get on the property ladder with this beautifully presented two-bedroom second-floor flat, complete with partial sea views from your own private balcony. With no onward chain, modern interiors, and thoughtful design throughout, moving in couldn't be easier.

Inside, you'll find two spacious double bedrooms, a sleek and seamless open-plan kitchen/lounge, and a contemporary three-piece bathroom suite. Perfect for first-time buyers with this shared ownership opportunity, the location offers unbeatable convenience – situated directly opposite Westcliff Train Station for commuters and just a short stroll to the beach to enjoy your weekends in the sand.

Added benefits include a secure, gated underground parking space, giving you peace of mind and easy access at all times.

Surrounded by vibrant seafront amenities, including independent cafés, restaurants, and scenic walking spots, this property blends coastal charm with commuter convenience. Start your home ownership journey with a property that delivers on all fronts.

Measurements

Kitchen

9'10 x 9'2 (3.00m x 2.80m)

Lounge

11'1 x 14'4 (3.38m x 4.39m)

Hallway

14'9 x 5'3 x 2'11 (4.50m x 1.62m x 0.90m)

Bedroom One

8'5 x 13'9 (2.58m x 4.21m)

Bedroom Two

6'8 x 12'3 (2.04m x 3.74m)

Bathroom

7'2 x 4'9 (2.20m x 1.47m)

Interior

Upon entering this stylish second floor flat, you're welcomed into a generous hallway that offers a clear line of sight straight through to the kitchen. Immediately to the left is Bedroom 2, a cosy double room ideal for guests, child or an optional home office. To the right, a large double-doored storage cupboard provides ample room for coats, shoes, and household essentials. An additional storage cupboard is also found to the left meaning plenty of room for your belongings. Further along the hallway, on the right-hand side, is the contemporary fully tiled bathroom, featuring modern fixtures, a low-level W/C, hand basin, and a full-sized bath with an overhead shower and a glass screen. Opposite the bathroom, Bedroom 1 is a spacious double room bathed in natural light, thanks to its large windows, creating a bright and inviting retreat. At the end of the hallway lies the modern kitchen, fitted with modern base and wall units, electric hob and oven with space for a fridge/freezer. The kitchen space flows seamlessly into the adjoining lounge, where large doors lead out to a private balcony offering partial sea views to the right – a perfect spot for relaxing with your morning coffee. Throughout the flat, you'll find modern light fixtures, gold detail feature switches and sockets, plush carpeting underfoot in the bedrooms and a sophisticated monochrome colour scheme that ties the entire space together with a clean, contemporary feel.

Exterior

A huge bonus with this stylish flat is the private, gated underground parking. With a designated parking space, you'll never have to stress about finding a place for your car. You enter the property through a gate and via steps, a secure entry fob system to enter and also an intercom phone system to conveniently allow guests access from your home when visiting, a small staircase up to the flat and through tidy communal areas. There is also a roof terrace area which residents have access to use, meaning glorious sea views and space to socialise on sunny days.

Location

An ideal location for anybody commuting, across the road from Westcliff Station, you'll be ready and on the way to work in a flash. The location also offers wonderful seafront pleasures, just a short walk to the beach, local restaurants serving up tasty dishes, cafe's and ice cream parlours for those sunny strolls with friends and family. Also within walking distance to Cliffs Pavilion Theatre, showcasing a variety of entertainment for those who enjoy the arts. You are a short drive to the high street and the very popular Leigh-On-Sea Broadway where you can enjoy cocktail evenings and yummy brunches.

School Catchments

Barons Court Primary School/Milton Hall Primary School and Nursery
Belfairs Academy

Tenure

Leasehold - 50% Shared Ownership.

Years remaining: 82.

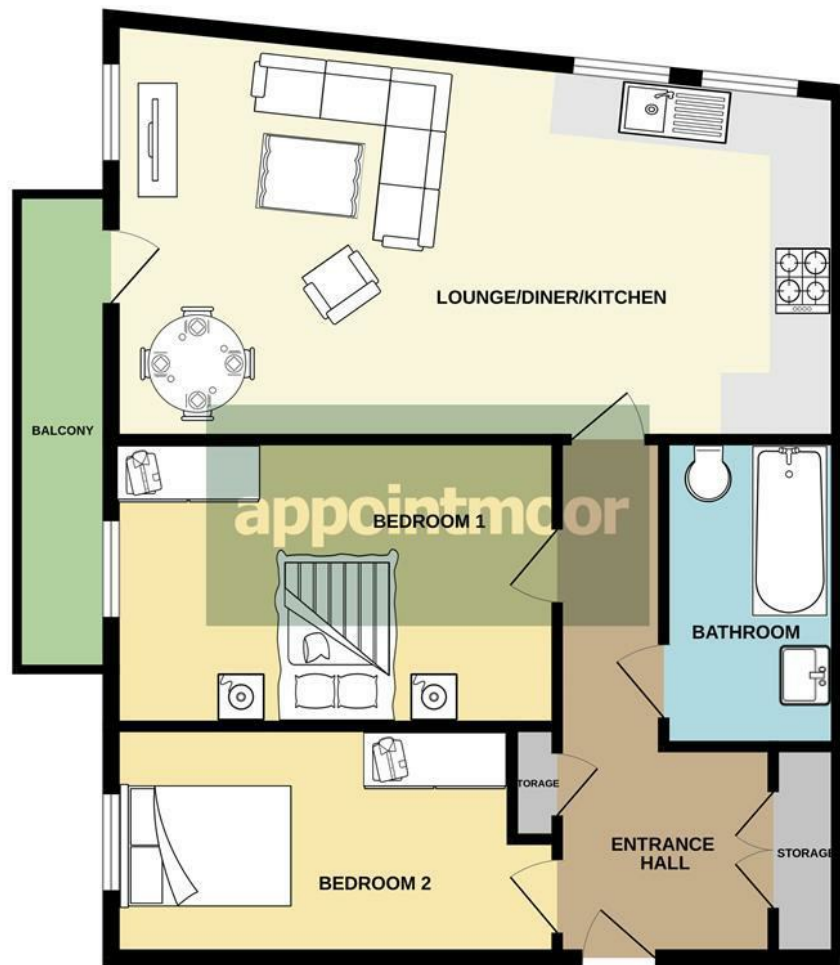
Annual Service Charge: £1942.80 (Monthly payments of £161.90).

Monthly Rent: £335.57.

Managing agent: Guinness Home Partnership.



SECOND FLOOR



Whilst every attempt has been made to ensure the accuracy of the floorplan contained here, measurements of doors, windows, rooms and any other items are approximate and no responsibility is taken for any error, omission or mis-statement. This plan is for illustrative purposes only and should be used as such by any prospective purchaser. The services, systems and appliances shown have not been tested and no guarantee as to their operability or efficiency can be given.
Made with Metropix ©2025



Energy Efficiency Rating		
	Current	Potential
Very energy efficient - lower running costs		
(92 plus) A		
(81-91) B		
(69-80) C		
(55-68) D		
(39-54) E		
(21-38) F		
(1-20) G		
Not energy efficient - higher running costs		
England & Wales	EU Directive 2002/91/EC	

Environmental Impact (CO ₂) Rating		
	Current	Potential
Very environmentally friendly - lower CO ₂ emissions		
(92 plus) A		
(81-91) B		
(69-80) C		
(55-68) D		
(39-54) E		
(21-38) F		
(1-20) G		
Not environmentally friendly - higher CO ₂ emissions		
England & Wales	EU Directive 2002/91/EC	

AGENTS NOTES: Appointmoor Estates Ltd as our Vendors Agents have endeavoured to check the accuracy of these sales particulars, but however, can offer no guarantee. These details are prepared as a general guide only, including details regarding lease, service charge, lease length and ground rent/review periods, council tax and deposit amount, and should not be relied upon as a basis to enter into a legal contract, or commit expenditure. An interested party should consult their own independent experts to verify the statements contained herein and before committing themselves to any expenditure or other legal commitments. The agent will not be responsible for any verbal statement made by any member of staff, as only a specific written confirmation should be relied upon. The agent will not be responsible for any loss other than when specific written confirmation has been requested. Floor plans are not to scale and only provide an indication of the layout. All measurements are approximate and should not be relied upon. We have not tested any apparatus, equipment, fixture, fittings or service and so cannot verify they are in working order, fit for their purpose, or within ownership of the sellers. Items shown in photographs are NOT included unless specifically mentioned in writing within the sales particulars.

VIEWINGS: BY APPOINTMOOR ESTATES ONLY

appointmoor



facebook.com/appointmoor



Instagram.com/appointmoor_estate_agents



twitter.com/appointmoor



linkedin.com/company/appointmoor

Appointmoor Sales 72 The Ridgeway,
Chalkwell, Westcliff-on-Sea, Essex, SS0 8NU
T. 01702 719966 W. appointmoor.co.uk